

# 2020 Report to Community

 educationmatters

Calgary's | trust | for public education

## Message from Board Chair and Executive Director



This year has been difficult for so many of us. And, despite our challenges as a community, 2020 has provided us with the opportunity to re-evaluate how we work together and to consider different ways we can help students through the lens of increasing access, providing equity supports and filling gaps created by the pandemic and disrupted classroom learning. I am both proud and grateful for the extraordinary efforts of our Board of Governors and our small and mighty team of wonderful staff. Thank you.

Finding new ways to make technology work for us has been impactful on so many levels this past year with all of our board meetings, student award sessions, and staff interactions moving online. It really highlighted that access to reliable technology was no longer a “nice to have” but a necessity, and the legacy of this pandemic has developed a greater focus on ensuring that we are all connected on multiple levels. What began as an emergency campaign to help students suddenly learning at home is evolving into a permanent resource to create a technology loan program for any student in need throughout the school year. 2020 has revealed the cracks within our community and has reinforced and reinvigorated our fundraising priorities.

Thank you for supporting Calgary Board of Education students and the work of EducationMatters – your investments into our most precious resource, our children, are making a difference now and for the future. We are incredibly grateful to have you as partners in the important work of helping our students learn and grow in our community.

Nancy Close, Chair



EducationMatters exists to support Calgary’s students and works collaboratively with the Calgary Board of Education and their schools whom we thank for consistently going above and beyond. Student food security, classroom resources, field trip funding (virtual and off-site), and many other program/resource funding enabled us to provide assistance where it was most needed. March 2020’s move to learning at home meant a seismic shift in the way we operate and necessitated some nimble adaptability from EducationMatters staff, board, and volunteers to ensure our efforts had the most impact.

I’m proud of the work we did in this exceptionally stressful year. EducationMatters donors mitigated some of the challenges students faced through investments in: technology that provided access to virtual learning for those in need; online math resources to help master math concepts both in and out of the classroom; food supports for students who rely on in-school programming; and more literacy resources to circumvent the challenges of quarantined library books to keep students reading at home or in school.

We’ve made great progress in 2020 and we will continue to be strong and supportive – 2021 will be another difficult and disruptive time for students. Thanks to our experiences this year, we are well-prepared to continue helping students find success in school, and we are so very thankful for the support and commitment of our community to help Calgary’s kids. Together, we made a difference for every student in need and helped alleviate some gaps COVID-19 had presented for a stronger society with a bright future.

Marilyn Field, Executive Director

## Board of Governors

Nancy Close     Chair  
Hanif Ladha     Vice-Chair  
Steve Aubin     Treasurer  
Amanda Field   Secretary  
Althea Adams  
Martin Cej  
Dr. Gene Edworthy  
Richard Hehr  
Kirk Johnson  
Marla Martin-Esposito  
David McKinnon  
Mark Saar  
Mike Shaikh  
Dr. Richard Sigurdson  
Melanie Sortland

## Honourary Ambassadors

Gerry Burger-Martindale Joanne  
Cuthbertson  
David Pickersgill

## Staff

Monica Bryan  
Marilyn Field  
Kenza Filali  
Alicia Hope-Ross  
Evelyn Martinez  
Emil Nguyen  
Helen Nowlan-Walls  
Kathryn Schilman

## Contact Us

1221 8 Street SW  
Calgary, AB T2R 0L4  
Tel: (403) 817-7468  
Email: [info@educationmatters.ca](mailto:info@educationmatters.ca)

[www.educationmatters.ca](http://www.educationmatters.ca)  
[@edmattersyyc](https://www.instagram.com/edmattersyyc)

Charitable Registration:  
#898887005RR0001

## 2020 By the Numbers



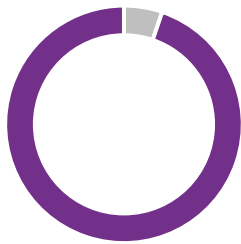
Distributed to support Calgary's students



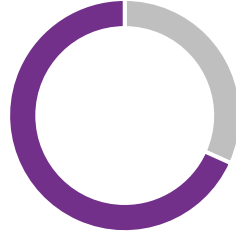
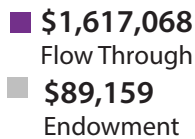
Student award disbursements totalling over \$490,000



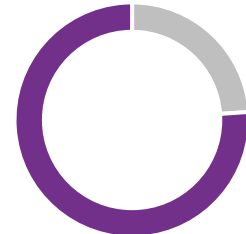
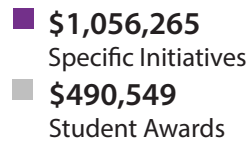
Schools/departments received funding



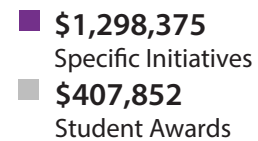
Gifts by Type\*  
(gross)



Grants by Distribution



Gifts by Fund Type



Since 2003 EducationMatters has:

Received in excess of

**\$20M**

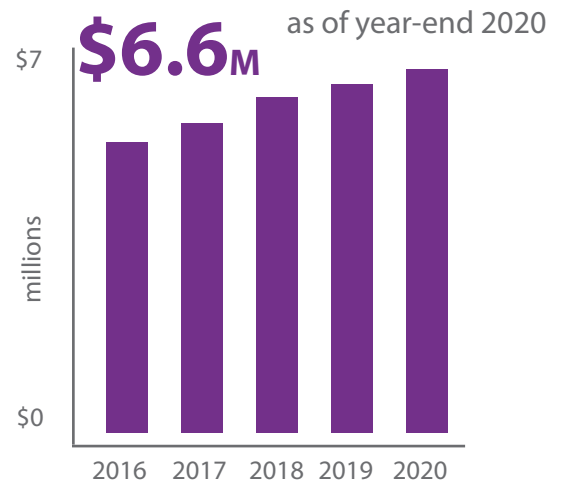
in donations

Disbursed more than

**\$16M**

in grants and student awards

### Endowment Fund Market Value





# 2020 Program Grants

## Enhancing Student Education

# Total Disbursed: \$1,062,260

\*Total grants (\$1,062,260) does not include unused grant amounts returned from prior year distributions.

### NW

<b>Arbour Lake School</b>
Back to School
<b>Balmoral Middle School</b>
Back to School
<b>Belvedere Parkway School</b>
Picnic Tables, Friendship Bench & Bee Hotel Renovation
<b>Bowcroft School</b>
Back to School
<b>Bowness High School</b>
Back to School
<b>Capitol Hill School</b>
Back to School
<b>Crescent Heights High School</b>
CBE Rap Battle
Tools for Community Bike Shop
<b>Edgemont School</b>
Back to School
<b>Highwood School</b>
Student Learning Resource
<b>Hillhurst School</b>
Back to School
<b>King George School</b>
Back to School
Teacher Microphones & Sensory Supports
<b>Louise Dean School</b>
Back to School
<b>North Haven School</b>
Back to School
<b>Queen Elizabeth High School</b>
Back to School
<b>Ranchlands School</b>
Back to School
<b>Rosedale School</b>
Back to School
Technology
<b>Rosemont School</b>
Projector Purchase
Smart Boards and Projection Equipment
<b>Silver Springs School</b>
Materials and Virtual Interaction with Author
<b>Sir John A. Macdonald School</b>
Back to School
<b>Terrace Road School</b>
Braiding Sweetgrass with an Indigenous Elder
<b>Thomas B. Riley School</b>
Back to School
Program fees for students in financial need
<b>Tom Baines School</b>
Back to School

### NE

<b>Cecil Swanson School</b>	\$675	Books for Kids Program	\$2,413
<b>Children's Village School</b>	\$1,100	Teacher's Pet/Scientists in Schools	\$4,099
		Back to School	\$600
	\$9,550	Bow Habitat Station	\$652
<b>Douglas Harkness School</b>	\$400	Books for Kids Program	\$15,000
<b>Dr. Gordon Higgins School</b>	\$2,500	GSA/Band Program	\$950
<b>Falconridge School</b>	\$480	Virtual Field Trips	\$1,000
<b>Lester B. Pearson High School</b>	\$608	New Horizons Leadership Conference	\$1,300
\$14,310		<b>Manmeet Singh Bhullar School</b>	
		Young Masters Program	\$756
	\$500	RazKids Licenses	\$2,027
	\$94	<b>Marlborough School</b>	
		Emergency winter clothing and winter toys	\$475
	\$600	<b>Monterey Park School</b>	
		Virtual Field Trips	\$2,500
	\$800	<b>Mount View School</b>	
	\$4,750	Back to School	\$400
		Sensory/Wellness Resources	\$697
	\$2,000	<b>Northern Lights School</b>	
		Back to School	\$400
	\$200	<b>Nose Creek School</b>	
		Back to School	\$950
	\$500	<b>O.S. Geiger School</b>	
		ArtFelt Studio Residency	\$4,342
	\$500	<b>Pineridge School</b>	
		Ski & Snowboard Lessons at WinSport	\$4,024
	\$330	<b>Terry Fox School</b>	
	\$2,708	Drum Sessions/Drum-Making Materials	\$2,520
		Back to School	\$1,125
		Cross-Country Skiing Trip	\$2,500
	\$950		
	\$499	<b>System-Wide</b>	
		2020-2021 Design the Shift: ConocoPhillips Innovation Incubator	\$19,000
	\$380	Amplify! Program	\$23,750
		Graphing/Scientific Calculators	\$50,000
	\$1,675	Technology Access/Loans for Ongoing Learning	\$240,079
	\$1,698	<b>Career and Technology Foundations and Studies</b>	
		Workshop and/or Lab Equipment	\$150,000
	\$750	<b>Discovering Choices (Multiple Locations):</b>	
	\$1,618	2019/2020 Graduation	\$22,000
		Barrier Removal Funds	\$30,000
	\$350	<b>Dual Credit and/or Exploratory Programs</b>	
		Barrier Removal Funds	\$200,000
		Pre-Employment: Pipe Trades, Welding, Carpentry, & Vet Tech	\$47,500
		Safety Credentials for Students Entering Trades	\$19,000
		Books and equipment	\$55,000

## SE

### Acadia School

Back to School \$1,200

### Andrew Sibbald School

Physical Education Equipment \$277

### Chaparral School

Back to School \$400

### Erin Woods School

Virtual Field Trips \$3,052

### Ernest Morrow School

Back to School \$1,125

On-the-Land Learning Trips \$2,800

### Fish Creek School

Student Materials and PPE \$1,425

### Forest Lawn High School

Area of Greatest Need/Athletic Fees and Equipment \$9,500

Intensive Dance Development Program \$5,803

### Haultain Memorial School

Back to School \$200

### Jack James High School

Back to School \$2,500

SoundKreations Subscription, Virtual Cooking & Skirt Making Sessions \$3,648

Young Masters Program \$202

### James Short Memorial School

Technology Hardware/Software Purchases \$724

### Keeler School

CSSI Therapy Swimming \$1,214

### Lake Bonavista School

Back to School \$200

### Lord Beaverbrook High School

ALP Construction Class \$15,480

Back to School \$750

### McKenzie Lake School

Young Masters Program \$405

### Midnapore School

Back to School \$480

### Nickle School

Back to School \$350

Paul Davis Presentation \$1,365

### Niitsitapi Learning Centre

Holiday Supports \$3,427

Back to School \$2,250

Virtual Field Trips \$4,000

### Patrick Airlie School

Back to School \$1,000

### Penbrooke Meadows School

Back to School \$500

Virtual Artist-In-Residence \$5,000

### Piitoayis Family School

Back to School \$1,800

Elder Honoraria \$500

Virtual Field Trips \$1,975

Literacy Supports, Plexi-Glass Dividers, PPE, and Young Writers' Workshop \$4,750

### Sam Livingston School

Raz-Kids License and associated books/supplies \$285

### West Dover School

School Learning Resources and Experiences \$965

### Wilma Hansen School

Back to School \$825



Team Giordano helped make the holiday season a little bit brighter for hundreds of CBE families in 2020. Many folks were already struggling prior to the pandemic and the impact of job losses, economic slowdown, and unanticipated sick leave further compounded already tenuous financial positions. Mark, Lauren, and their friends at The Italian Centre Shop and Italian Open provided families in need with grocery gift cards to ensure that students would be well-fed during their extended winter break,



"Dance team this year taught me dedication and discipline. Sticking to something and going through with it till the end. If I can stay in dance team, and dedicate a certain time to this program, I can do anything."

- Grade 11 Intensive Dance Development Student

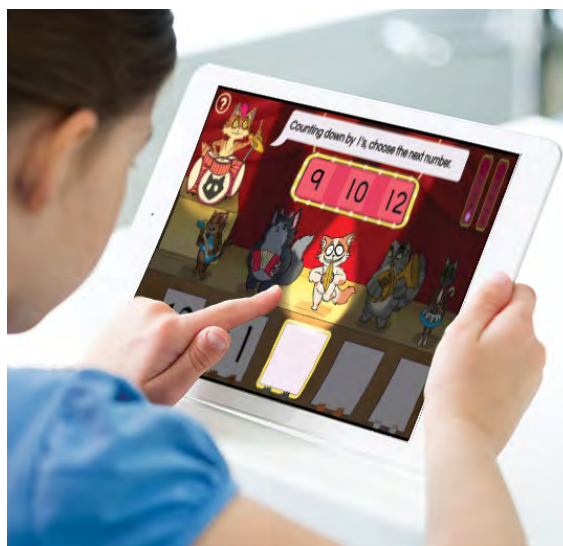
## SW

<b>A.E. Cross School</b>	
Back to School	\$250
<b>All Boys Program</b>	
Back to School	\$640
<b>Battalion Park School</b>	
Books for the School	\$188
<b>Canyon Meadows School</b>	
Back to School	\$400
<b>Cedarbrae School</b>	
Back to School	\$600
<b>Chinook Park School</b>	
Various activities, supplies, equipment and resources	\$6,800
<b>Citadel Park School</b>	
Raz-Kids licenses and other enrichments/supports	\$2,709
<b>Connaught School</b>	
Back to School	\$640
<b>Dr. Freda Miller School</b>	
Back to School	\$500
<b>Glamorgan School</b>	
Back to School	\$450
<b>Glendale School</b>	
Snowshoes for Physical Education Program	\$950
<b>Griffith Woods School</b>	
Books	\$360
Young Masters Program	\$405
<b>Louis Riel School</b>	
Literacy/Math Resources and Basic Supplies	\$2,000
<b>Louise Dean School</b>	
Emergency Supports	\$950
<b>Rideau Park School</b>	
Debate Program	\$2,000
<b>Samuel W. Shaw Middle School</b>	
Back to School	\$700
<b>Somerset School</b>	
Books and Resources for Reading Program	\$922
<b>Sunalta School</b>	
Back to School	\$300
<b>Vincent Massey School</b>	
Back to School	\$1,125
<b>William Reid School</b>	
Back to School	\$300
Outdoor Classroom and Work with Elder	\$926
<b>William Roper Hull School</b>	
Back to School	\$760
<b>Woodlands School</b>	
Physical Education Equipment	\$950
<b>Woodman School</b>	
Option Classes	\$475



“This program is creating reciprocity and respect between ALP [Adapted Learning Program] and neuro-typical Lord Beaverbrook students. It is giving some of our students who do not often get the opportunity to mentor others the chance to be leaders and positive role models for others.”

– Teacher, ALP Workshop grant



When more than 125,000 Calgary students pivoted to at home learning in March 2020, EducationMatters donors helped provide laptops and tablets to more than 3,200 students unable to access a device to take part in online learning. What started as an emergency campaign has evolved into a brand new long-term technology loan program to ensure that every student has the resources they need to engage with the learning process, no matter what the world throws their way.





## 2020 Student Awards Fuelling Potential

Total Disbursed: \$490,549

Aaron, Harben Vocal Music Prize	\$450	Hopewell Scholarship	\$3,000
Aboriginal Students Award	\$1,000	Hugh Robertson Science Prize	\$1,000
Accomplished Angels Student Award	\$18,750	Integro Legacy Post Secondary Scholarship	\$4,000
Arrata Family Award for New Canadians	\$2,200	Ivy & Len Freeston Award	\$1,000
Benjamin (Ben) Albert Award	\$7,500	James Fowler School Award	\$1,000
Bob Clarke Memorial Scholarship	\$175	Joan Ethier Women in Science Scholarship	\$18,770
Bowness Green & Gold Awards	\$7,000	Job's Daughters International Scholarship	\$3,000
Breakthrough Opportunity Bursary for New Immigrants	\$3,000	Juno Beach Parents' Society Social Studies Scholarship	\$500
CBE Staff Association Scholarship Award	\$12,000	Keith Yu Memorial Scholarships	\$2,500
City of Calgary Degree Granting Scholarship	\$45,900	Kermet Archibald & Jacoba Van den Brink Entrance Bursary at the Calgary Foundation	\$90,000
City of Calgary Post-Secondary Scholarship	\$1,700	Laurie Sommerville Scholarship Award	\$6,800
Claire McCormick Poppitt Award	\$500	Lawrence Parker Memorial Scholarship	\$1,000
CNIB Memorial Scholarship	\$800	M.W. & J.R. Tebo Memorial Journalism Award	\$663
David E. Mitchell Award	\$2,000	Marguerite Patricia P. Bannister Memorial Degree Awards at the Calgary Foundation	\$90,000
Doris Donald Memorial Bursary in Fine Arts	\$300	Marjorie Taylor Memorial Scholarship	\$3,750
Dr. Gordon Higgins Student Award	\$600	Marnie Whitehead Citizen of the Year Award	\$225
Drs. Harry & Martha Cohen Promising Student Prize	\$450	Mary Belkin Memorial Scholarship	\$1,000
Durkie Arts Award	\$32,055	Maurice A. Spring Memorial Academic Scholarship	\$750
Dustin Peers Memorial Visual Arts Award	\$10,500	McKillop Student Award	\$4,000
E. George Brigden Memorial Science Scholarship	\$1,000	Nickolas Paswisty Memorial Bursary	\$500
Edith Berger Memorial Scholarship	\$1,000	Richard D. Tingle Scholarship Award	\$3,000
EducationMatters Career Pathways Student Award	\$1,000	Rosalie Szuch Scholarship	\$4,000
EducationMatters Future Leaders Award	\$1,000	Ross Glen Scholarship	\$1,000
Eimer Scholarship Fund Award for Health Care	\$8,000	Ruth Ursula Leipziger Scholarship	\$1,500
EllisDon Student Award	\$2,211	Southland Transportation Integrity Scholarship	\$6,000
Emily Sharpe Memorial Award	\$17,000	Steven Irving Memorial Music Scholarship	\$1,500
Emmalee Cherweniuk Award	\$800	Tenaris Merit Award	\$10,000
ENMAX Scholarship	\$5,000	Thomas Walter Morrish Memorial Scholarship	\$600
Everett and Mitchell Code Scholarship	\$5,000	Thorner/Johnston/DiMarzo Family New Immigrant Bursary	\$13,500
Fogolâr Furlan di Calgary Italian Award	\$3,000	TL Greene Memorial Art Prize	\$2,000
Forest Lawn Resiliency Scholarship	\$4,000	Tom Inkster Memorial Scholarship	\$1,000
Frank Whipple Memorial Bursary	\$1,000	Viscount Bennett Band Parents Bursary	\$100
Gary Weimann Award for Community Service	\$1,000	Warriors Legacy Endowment Scholarships	\$1,500
Greta Marofke Kids Affected by Cancer Memorial Scholarship	\$3,000	Western Canada Leader of Tomorrow Award	\$1,500
Hal Winlaw Health & Nutrition Legacy Award	\$1,000	William Aberhart Alumni Scholarship	\$5,000
Haworth & Heritage Business Interiors Architecture/Interior Design Scholarship	\$2,000	William Keir MacGougan Memorial Bursary	\$1,000



# 2020 Donors

## Investing in Our Future

Sudesh Acharya  
Patrick Achtemichuk  
Tera Adelman  
Ghazal Akhtar  
Jasmine Alano  
Craig Albert  
Gerald R. Albert  
Samantha Albert  
Sandeep Alexander  
Lyndsay Allen  
Doreen Andersen  
Martin Andersen  
Daryl Anderson  
Patricia Anderson  
Mark Annett  
Mark Anselmo  
Patience Besongngem Arambi  
ARC Financial Corporation  
Assured Plumbing & Heating Ltd.  
ATB Financial  
Suzie Atherton  
Onome Atife  
Carina Au  
Adrian Audet  
Awning Factory  
Sam and Diane Aylesworth  
Jocelyn Babcock  
Kevin Baer  
Navjot Bahad  
Yun Bai  
Linda Baranieski  
Tracey Barrett  
Benjamin Barrus  
Amands Bates  
Barbara R. Beaton  
Liz Bedford  
Belich Family Fund at Calgary Foundation  
Lauren Bell  
Igor Belokopytov  
Belvedere Parkway School  
Benevity  
Lindsey Benoit  
Rudy and Jeanette Berger  
Ian Berman  
Calgary Area City Council of Beta Sigma Phi  
Cathy Betz  
Navdeep Bhatia  
Tarjinder Bhullar  
Jana Bickel  
Albert and Marilyn Blagdon  
Nick Blair  
Koby and Zena Blais  
Richard Blakney  
Emily Blanchard  
Chris Boice

Mike and Maja Borowski  
Revan Bosch  
Shawn Boss-Moodie  
Bruce Bowser  
Lyle and Connie Brandt  
Suman Brar  
Bree Eriksen Award Fund at the Calgary Foundation  
The Bregazzi Family  
Briar Hill School Foundation  
Rachel Brinac  
Suzie Broadbent  
Amanda Brown  
Evan Brown  
Gordon Brown  
Kristen Brown  
William Brown  
Monica and Doug Bryan  
Jennifer Bue  
Jamie Buechler  
Charlene Buenting  
Everett Buhler  
Gerry Burger-Martindale  
Barbara Burggraf and Brian Freeston  
Jason Burrell  
Wayne Burwash  
A. Byrne  
Tara & Kevin Byrne  
Valerie Caldas  
Catherine Caldwell  
Calgary Flames Foundation  
Calgary Foundaton  
Calgary Hitmen Foundation  
Calgary Italian Open Society  
James Campbell  
CanadaHelps  
Brad Carson  
Marica Cassis  
Martin Cej  
Michelle Chalifoux  
Carolina Chamorro Vina  
Andy Chan  
Mei Chan  
Wendy Chan  
Jeannie Chau  
Daniel Chavez  
Gina Chavez  
Galileo Cheng  
Jeremy Cheng  
Cletus Chesami  
Peter Cheung  
Esther Chow  
Crystal Chretien  
Tammie Christ  
Susan Church  
City of Calgary

Colleen Clark  
Hanna Clark  
Pamela and Tony Clark  
Robert Clark  
Travis Cleland  
Nancy and Rob Close  
Mark Coates  
ConocoPhillips  
Casey Copeland  
Richard Cotter  
Jean and George Creagh  
Dr. Brendan and Glenys Croskery  
Tom Cross  
Colin and Sarah Crossman  
Kerry Cundal  
Cameron Cunningham  
Kathleen Currie  
Katy Cutler  
CyberGrants, LLC  
Irene Dafoe  
Fahreen Damji  
Robin Damm  
Carie Danyschuk  
Joern Davidsen  
Margaret A. Dawson  
DAX DEV Consulting Inc.  
Melynda De Marcos  
Anthony Deakin  
Dale Deering  
Li Mei Deng  
Joann and Stu Dewhurst  
Arlene Dickinson  
Shannon Dos Anjos  
Sue Drader  
John C. Drysdale  
Chris Dutton  
Peter J. Edwards and Maxime Leverett  
Dr. Gene Edworthy  
Efficient Machine Works Ltd.  
Eimer Scholarship Fund at the Calgary Foundation  
Ellen Embury  
Margaret Emslie  
Entwistle Family Foundation  
Equinor Canada Ltd.  
Dale Eresman  
Randy and Shelly Eresman  
Estate of Margot Gruener  
Estate of William John Whelan  
Joan Ethier  
Executive Millwork Inc.  
Eyesis Eyecare  
Claire Fan  
Wendy Farrance  
Tiana Fech  
Louise Fernandes



Amanda Field	James Holoboff	Luke Lau
Landa Field	Lindsay Holten	Abbey Lawrence
Marilyn Field	Michelle Hornby	Leap Energy Solutions Corp.
Rebecca Fissel Schaefer	Todd Houston	Jade Lee
Leah Fochuk	Pat Hovan	William Lee
Chris and Mary Fong	Jodee Hrehirchuk	Marcia and Larry Lehev
Nikkii Foote	Beverley and Ken Hubert	Rogers Lehev
Linda Forde	Anne Laure Hug	Ryan Lenz
Lindsey Forsyth	Candice Hughes	Leo Leung
Katrina Fost	Sarah Hughes	Dan Levson
Angela Fraser	Ann Hung	Andrew and Shannon Levson
Michael Freake	Robert Hurdman	Yan Li
Gae Freeborn	Darcie Hurley	Ariga Lin
Cheryl Freeman	Jason Hutchins	Chin-Chu Lin
Jeff Funnell	Joyce J. Hyden	Stephanie Lindsay
Kelly Gaab	Nicole Hynes	Elsea Lindstrom
Janette Gerow	Donette Hyslip	Kathryn Linton
Megan Geyer	Intact Insurance	Karen Little
Ali Ghajar	Loree Irving	Hui Fang Liu
Lynsey Gibney	Lyla Issa	Yi-Pin Liu
Jason Giborski	Italian Centre Shop Calgary Ltd.	Mhairi Loftus
Gift Funds Canada	Nevena Ivanovic	Leanne Long
Tanya Gilchrist	Scott Jackson	Louisa Lougheed
Bhavan Gill	Michael James	Lindsey Louro
Birender Gill	Jbyte Systems Inc.	Ke Lovan
Andrea Gillis	Bethel #23 Calgary, Job's Daughters International	Shannon Low
Shannon Glover	Simran Johal	Julie Lowry
Gnaros Inc.	John and Victoria Tremayne Family Foundation	Stephanie Lowther
Gabriel and Kellie Goldberg	Kirk Johnson	Ray Luc
Tracy Gonzalez	Laurena Johnson	Janie Lucas
Ryan and Amy Goos	Gwen Johnston	Hamhong Ly
Deni Greaves	Soo Cheol Jung	Huong Ly
Angela Green	K&D Truck Parts Ltd.	Anh Ly-Voong
Kathy Greenwood	K. Jamani Professional Corporation	Cindy Mack Cutting
Harold Grieb	Naaz Kahe	Michael MacPhee
Samantha Griffin	Momoko Kanaya	Beryl Maguire
Windchill Ha	Ning Kang	Curtis Mah
Kelly Hackman	Sharan Kaur	Dean Mah
Joseph Haddock	Amy Keith	Kara Mah
Kenneth Haggart	Kermet Archibald & Jacoba Van den Brink Memorial Scholarship Fund at the Calgary Foundation	Milton Mah
Karla Hamilton	Jennifer Kha	Johan Malan
Praneil Hansraj	Dahlia Khajeei	Melissa Malcolm
Adrian and Anne Harding	Ramzah Khan	Vivek Malhotra
Chris Hardy	King George School Council	Tural Mammadov
Dr. Lyle R. Hare	Saveliy Kirkorov	Sandra Mann
Elizabeth Harris	Anais Kneppers	Julie Marcano
Linnaea Harrison	Shira Kogut	Marguerite Bannister Fund at the Calgary Foundation
Fanny Harsono-Teo	Andrea Kolatschek	Sarah Marshall
Richard and Lois Haskayne	Goran Kragulj	Holly Martin
Ronagh Hatcher	Bryan Krawchyshyn	Marla Martin-Esposito
The Hathaways	Diana Kurila	Christa Marx
Longjiang He	Wang Li Connie Kwok	Steve Matthews
Collin Heggerud	Hanif Ladha	Mawer Investment Management
Richard and Dr. Judy Hehr	Hester Lam-Szalay	Tom McCandless
Bert Hettinga and Joyce Leong	Christina Lane	Shelagh McConnell
Varnita Hewitt	Erin Lane	Donald S. McCormick
Darlene Hittel	Ken and Pat Langston	Christine McCrory
Alan and Brenda Hocking	Lorne and Patricia Larson	Patrick McFetridge
Michael Hokanson		Sara McHardy

Ashley McKenzie  
David and Katie McKinnon  
Emily McKnight  
Janel McKnight  
Lesley McLean  
Sheila McLennan  
Shirley M. McWalter  
Patricia Medhurst  
Ashish Mehta  
Pradip Mehta  
Qiaobing Mei  
D. Mensah  
Cheryl Ann Merchant  
Sarah Merrick  
Brett Michelson  
Kyriacos Miltiadous  
Kerry Milton  
Ravinder Minhas  
Mobility Quotient  
Dana Moffit  
Jennifer Moore  
Kimberley Morgan  
Melanie Morgan  
Peter Morgan  
Imran Mulji  
Shannon Munro  
McKenzie Murdoch  
Craig Myers  
Elizabeth Nagy  
Melissa Nagy  
Angie Nairn  
Diana Nawata  
Carol Neale  
Sandra Neill  
Amanda Neves  
Angela Ng  
Joanna Ng  
Stephanie Ng  
Jenny Ngo  
Minh Nguyen  
Margaret Nicholson  
Peggy Nicholson  
Gurcharan Nijjer  
Steve Nikiforuk  
Trenna Norris  
Helen Nowlan-Walls  
Lanaia Nykyforuk  
Jamie O'Brien  
Karen O'Malley  
Joshua Orzech  
OSI Consulting Corporation  
Hana Osman  
Zainab Osman  
John O'Sullivan  
P. Leckie Professional Corp.  
True Buddah Pai Yin Temple  
Liana Pakhomova  
Lindsay Palichuk  
Steven Pangracs

Sukhi Pannu  
Vicki Paredes  
Parkland Cares  
Rachel Parris  
Ashley Pawluk-Hallett  
Jenny Pearen  
Roslynn Peters  
Chau & Julie Pham  
Pharmasave on Northmount  
Lynelle Pierzchalski  
Heather Pineo  
Stephanie Pinto  
Aksana Pisanka  
Pamela Plain  
Plains Midstream Canada  
Barbara Plicka  
Amanda Proctor  
Kirsten Pugh  
Lindsay Quintal  
Ziko Rajabali  
Joanne Ramondt  
Ambi Ray  
Jennifer Razzo  
RBC Foundation  
Jill Rehman  
Michelle Reinholz  
Richard R. and Linda A. Singleton Education Fund  
at the Calgary Foundation  
Niki Rickhi  
Chelsea Ringstad  
Dr. Brock Robertson  
Christy Robertson  
Don Rostad  
Routine Inc.  
Carrie Rowe  
Julia Rozema  
Terry and Elaine Rusnack  
Michael and Susan Ruttan  
Sheena Ryall  
Kamran Saeed  
Georgia Sainas  
Michael Sainas and Virginia Brown  
Jennifer Saldana  
Gigi Salvador  
Samaritan Club of Calgary  
Geoff and Corinne Sandhurst  
Kristine Sare  
Kathryn Schilman  
Eckehart (Mike) Schubert  
Erin Sellers  
Craig Senyk  
Heewon Seo  
Sarah Serl  
Mavara Tahir Shafiq  
Ajay Shah  
Mike and Linda Shaikh  
Sylvia Shaw  
Scott Shelestnsky  
Dori Shirvell

Amit Shroff  
Anne Marie Shutt  
Opie Sidhu  
Dr. Richard Sigurdson  
Rebecca Sikkes  
Silver Lake Technology Management LLC  
Gurprit Sonia Singh  
Catherine Skene  
Skipping Stone Foundation  
Diane Skolny  
Vanina Sleifca  
Jolene Small  
Vincent and Barbara Smith  
Charla Smith  
David Smith  
Lynne Sneddon  
Diana Soderquist  
Laurie Sommerville  
Patricia Sonnenberg  
Nikhil Sonpal  
Melanie Sortland  
Rose & Louis Sortland  
Terry Sparks  
Chrysoula St. James  
Edward D. Stair  
Step Change Management Consultancy Inc.  
Anita Stevens  
Jessica Stoy  
Strategic Charitable Giving Foundation  
Gwen Sturdy  
Ganesh Subramaniam  
Melanie Sucha  
Kathryn Summach  
Yin Sung  
Katherine Sutherland  
Charles Szuch  
Lucene Tahmazian  
Taiga Building Products  
Barry Taitinger  
Meng-Hooi Tan  
Mark Taylor  
Ken Tebin  
Tenaris Global Services/Prudential Steel ULC  
Dorothy Thomas-Graff  
Audrey Thorner  
Kevin and Sara Tod  
Fiona Tower  
Suzanne Tran  
Tom and Bonnie Trathen  
Josh Truba  
Justin Trupp  
Marguerite Trussler  
Jessica Twemlow  
United Way of Calgary and Area  
University School  
Tracy Ure  
Nicole Van Tol  
Travis Vande Beek  
Jeanine Vany

Tania Vasquez  
Kirsty Venner  
Kirill Vereshchagin  
Rattanjeet Vig  
Chris Vivier  
Stanley Vu  
Hao Vuong  
The Wagemakers Foundation  
Eleanor Walker  
Leah Warren  
Amber Watt  
Mandy Watts  
Robert G. Welty  
Kayla Wharton  
Ed Wheeler  
Margaret Whelan  
Anna Williams  
Karla Wilson  
Nikki Wilson  
Elescia Wojak  
Kenneth Wong  
Marnie Wong  
Carmen Wood  
Trisha Woodlock  
Hannuo Wu  
Tandy Wu  
Wei Wu  
Yufei Wu  
Lora and Terry Wyman  
Xiao (Michelle) Xing  
Vincy Yam  
Lei (Jerry) Ye  
Anita Yee  
Chris Yeo  
Li Yin  
Chun Kit Yip  
Kristie Zakaib  
James Zehner  
Yueming Zhan  
Ke Zhang

Mingzong Zhang  
Wei Zhang  
Jocelyn Zoller  
Karen Zwiers  
Anonymous Donors

### ***Gifts Made in Memorial***

Trevor Adams  
Benjamin (Ben) Albert  
David James Anderson  
Arshia Arbabbahrami  
Edith Berger  
Manmeet Singh Bhullar  
Jared Blayways  
Evan Clarke  
Jas Dhillon  
Dorna & Dorsa  
Emily  
Nav Ghali  
Roy Gillespie  
Pamela Jane Hardy  
Tom Inkster  
Steven Irving  
Dr. Tom & Vera Johnston  
Maureen Langston  
Laon Jung  
Joann Lehev  
Will & Wes Levson  
Mikka the Dog  
Nirvair Singh Minhas  
Nickolas Paswisty  
Kaiti Perras  
Judy Persson Thomas  
Tylene Readwin  
Alex and Patty Skene  
Marie Suecroft  
Wayne Towers  
Beth Veale  
Bill Whelan

### ***Gifts Made in Tribute***

Elliott  
Gerald Hankins  
Regan Hay  
Staff at King George School  
Eli and Sandy Kogut  
Rebecca Kundert  
William and Wesley L.  
Eve McGuire  
Erik Rozema

### ***Benefactors Lifetime Donations***

#### ***Transformational Donors \$500,000+***

Anonymous  
Calgary Foundation  
City of Calgary  
N. Murray & Heather Edwards  
Integro Legacy Fund  
Kermet Archibald and Jacoba Van den Brink Memorial  
Scholarship Fund at the Calgary Foundation  
Marguerite Patricia P. Bannister Scholarship Fund  
at the Calgary Foundation  
Allan Markin

#### ***Pacesetter Donors \$250,000-\$499,999***

Canadian Association of Petroleum Producers  
ConocoPhillips Canada Resources Corporation  
Joan Ethier  
The Explorers and Producers Association of Canada  
Estate of Emily Sharpe  
Hopewell Group of Companies  
N. Murray Edwards Charitable Foundation  
RBC Foundation





## **Leadership Donors** **\$100,000-\$249,999**

Anonymous  
Gerald R. Albert  
AMP Financial Inc.  
BP Canada Energy Company  
Calgary Flames Foundation  
CBE Staff Association  
Cenovus Energy Inc.  
Chevron Products Company  
Children's Hospital Aid Society  
Rob & Nancy Close  
Community Spirit Program  
ENMAX Energy Corporation  
Festo Inc.  
The Flanagan Foundation  
Government of Alberta - Alberta Culture and  
Community Spirit Program  
Mawer Investment Management Ltd.  
Nexen Inc.  
Margaret & Ron Southern\*

## **Major Donors** **\$20,000-\$99,999**

Anonymous  
Said Arrata  
Sam & Diane Aylesworth  
Barbara R. Beaton  
Beta Sigma Phi Society  
David & Leslie Bissett  
Boris Rochman Fund at the Calgary Foundation  
Bow Valley Music Club  
Bowness Lions Club  
Briar Hill School Foundation  
Barbara Burggraf & Brian Freeston  
Burns Memorial Fund  
Cadmus Foundation  
Calgary Health Region  
Canadian Imperial Bank of Commerce  
Susan Church  
Pat & Joel Cochrane  
Bryce & Kim Code  
Joanne Cuthbertson & Charlie Fischer  
Eimer Scholarship Fund at the Calgary Foundation  
Enbridge Inc.  
Estate of Kenneth Robert Hilderman  
Estate of William John Whelan  
Louise Fernandes  
Helen Fielding  
First Student Canada/Cardinal Coach Lines (Stan Weber)  
Jacqueline Flanagan  
Fogulâr Furlan di Calgary  
Chris & Mary Fong  
Roland & Trish Guenette  
Richard & Lois Haskayne  
Haworth & Heritage Business Interiors  
Richard & Dr. Judy Hehr

Henry Wise Wood Parents & Alumni Association  
Bert Hettinga & Joyce Leong  
Dr. Gordon Higgins\*  
Estate of Kenneth Robert Hilderman  
Hopewell Residential  
Imperial Oil Foundation  
Japhda Holdings Inc.  
The Kahanoff Foundation  
Rogers & Joann Lehw and Family  
Dr. Lindsay Long & Sonny Chan  
Markin Petroleum Inc.  
Manfred & Linda Marofke  
Duncan & Barbara\* McKillop  
Doris Mitchell  
Mobility Quotient  
The Newall Family Foundation Trust  
Nickle Family Foundation  
Gail & David O'Brien  
P. Leckie Professional Corporation  
Palix Foundation  
Penn West Energy Trust  
Petro-Canada  
David & Pam Pickersgill  
Pyke Family Fund at the Calgary Foundation  
Queen Elizabeth High School  
Queen Elizabeth Parents Association  
RGO Office Products  
Rotary Club of Calgary  
Mark E. Saar  
Samaritan Club of Calgary  
Mike & Linda Shaikh  
Jim & Marilyn Shepherd  
Laurie Sommerville  
Southland Transportation Ltd.  
Terry Sparks Family  
Spartan Controls Ltd.  
Berna Stewart & Ian Wilson  
The Stoney-Tundra Limited  
Tenaris Global Services/Prudential Steel ULC  
Doris Thompson\*  
Thorner/Johnston/DeMarzo Family Fund  
at the Calgary Foundation  
Gloria Toole  
Marguerite Trussler  
Turkish Canadian Cultural Association of Calgary  
Uniserve Communications Corp./Glenbriar Technologies Inc  
United Way of Calgary and Area  
Stan Weber  
Werklund Foundation  
Bill\* & Margaret Whelan  
William Aberhart 50th Anniversary Reunion Committee  
Williams Family Fund at the Calgary Foundation  
Lora & Terry Wyman

## **Founding Supporters**

Anonymous  
Diane & Sam Aylesworth  
Barbara R. Beaton  
Ash & Kanchan Bhasin  
David & Leslie Bissett  
Brett Wilson Family Legacy Fund at the Calgary Foundation  
Barbara Burggraf & Brian Freeston  
Pat & Joel Cochrane  
Joanne Cuthbertson & Charlie Fischer  
Patti D'Arcy  
Phil & Susan Evans  
Donna & Larry Fan  
Louise Fernandes  
Claudia & Randy Findlay  
First Student Canada/Cardinal Coach Lines (Stan Weber)  
Chris & Mary Fong  
Richard & Lois Haskayne  
The Kahanoff Foundation  
Sanders D.H. Lee  
Rogers & Joann Lehw and Family  
Stephen J. Letwin  
Brian & Brenda MacNeill  
Don & Anne McCaffrey  
McLean Holdings Corporation (Gerry Wood)  
Darcy & Lori Moch  
Mount Royal University  
Dennis L. Nerland & Jennifer Pollock  
Ted & Margaret Newall  
Nickle Family Foundation  
David & Gail O'Brien  
Petro-Canada  
David Pickersgill  
Pam Pickersgill  
RBC Financial Group through RBC Foundation  
Michael R. Rempel  
RGO Office Products  
Vera Ross  
SAIT Polytechnic  
Bill & Toshimi Sembo  
Kathy & Richard Sendall  
Mike & Linda Shaikh  
Jane & Pat Shouldice  
Silverwing Energy Inc.  
Margaret & Ron\* Southern  
Southland Transportation Ltd.  
Terry Sparks Family  
Swan Group Inc.  
Michael J. Tims  
University of Calgary  
Mac & Susan Van Wierlingen  
Bill\* & Margaret Whelan  
Dr. Norman Wong  
Terry Wright

\*Deceased



## Grant and Award Transactions By Fund

<b>Fund Name</b>	<b>E/FT</b>	<b>Total 2020 Disbursement</b>	<b>Fund Market Value</b>
Aaron Family Scholarship Fund	E	\$-	\$16,385
Aaron, Harben Vocal Music Prize Fund Student	E	\$450	\$14,628
Aberhart Alumni Scholarship Fund	E	\$5,000	\$89,971
University of British Columbia      Mount Royal University      University of Calgary			
Aboriginal Students Award Fund Mount Royal University	FT	\$1,000	\$2,986
Accomplished Angels Student Award Fund	E	\$18,750	\$1,182,566
Bow Valley College      Alberta University of the Arts      Mount Royal University Reeves College      University of Calgary      MC College			
Ann Strand Memorial Awards Fund	E	\$-	\$9,709
Anthony Ward Memorial Fund	E	\$-	\$4,905
Arrata Family Award for New Canadians University of British Columbia	E	\$2,200	\$51,187
Athletics Endowment Fund, Helping Students in Need	E	\$-	\$53,201
Avis Hibbard Bursary	E	\$-	\$1,534
Benjamin (Ben) Albert Legacy Fund University of Calgary      University of Alberta	E	\$7,500	\$351,555
Bennett Jones Scholarship Fund	E	\$-	\$12,113
Beverley Hubert Global Citizenship Fund	FT	\$-	\$95
Beverley Hubert Global Citizenship Fund	E	\$-	\$25,632
Beyond Your Backyard Opportunities Fund	E	\$-	\$11,836
Big Brothers Big Sisters Society of Calgary & Area Award Fund Carleton University	E	\$903	\$20,362
Big Brothers Big Sisters Society of Calgary & Area Award Fund Student	FT	\$1,077	\$823
Carleton University			
Bob Bannerman Memorial Fund	E	\$-	\$16,641
Bob Clarke Memorial Scholarship Student	E	\$175	\$2,586
Breakthrough Opportunity Bursary Fund University of Calgary      University of Western Ontario	FT	\$3,000	\$27,000
Bruce Leidl Composition Award Fund	E	\$-	\$16,227
Calgary Entrepreneur Organization (CEO)	FT	\$-	\$625
Calgary Flames Ambassadors Supports for Kids with the Gift of Dyslexia Fund	FT	\$-	\$10
Career Pathways Field of Interest Fund	E	\$-	\$86,731
Carolyn Baxter Memorial Award Fund	E	\$-	\$10,930
CBE Staff Association Scholarship Fund Mount Royal University      University of Calgary Queen's University      SAIT Polytechnic	FT	\$12,000	\$3,000
Christine M. Fielding Memorial Endowment	E	\$-	\$73,638
City of Calgary Degree Granting Scholarships University of Calgary      Mount Royal University	FT	\$45,900	\$11,900
City of Calgary Post Secondary Scholarships SAIT Polytechnic	FT	\$1,700	\$11,903
Civil Society & Citizenship Education	E	\$-	\$25,854
Civil Society & Citizenship Fund	FT	\$-	\$272
Claire Poppitt Award Student	E	\$500	\$7,323
CNIB Memorial Scholarship Fund Student	E	\$800	\$4,338
Colonel Walker Community School 1950 to 1965 Alumni Award	E	\$-	\$17,407
ConocoPhillips World Schools Debate Development Fund Rideau Park School	E	\$2,000	\$60,595

## Grant and Award Transactions By Fund

<b>Fund Name</b>	<b>E/FT</b>	<b>Total 2020 Disbursement</b>	<b>Fund Market Value</b>
<b>Cornerstone Fund, Enhancing Education for Economically Disadvantaged Students</b>	FT	\$1,307	\$328
Balmoral Middle School			
Canyon Meadows School			
Chaparral School			
Children's Village School			
<b>Cornerstone Fund, Enhancing Education for Economically Disadvantaged Students</b>	E	\$4,380	\$83,494
Bowcroft School			
Bowness High School			
Canyon Meadows School			
Capitol Hill School			
Cedarbrae School			
<b>Creagh Family Fund</b>	E	\$1,465	\$35,802
CBE - Literacy Enriched Learning Environments			
<b>CTS Scholarship Fund</b>	FT	\$-	\$4,000
<b>David E. Mitchell Award</b>	E	\$2,000	\$60,514
University of Calgary			
<b>David James Anderson Memorial Award Fund</b>	E	\$-	\$16,244
<b>David James Anderson Memorial Award Fund</b>	FT	\$-	\$356
<b>Doris Donald Memorial Bursary in Fine Arts Student</b>	E	\$300	\$651
Douglas Norton Scholarship	E	\$-	\$2,898
<b>Dr. Brendan Croskery Aboriginal Culture Fund</b>	E	\$-	\$46,586
<b>Dr. Gordon Higgins Student Award Fund Student</b>	E	\$600	\$32,084
<b>Drs. Harry and Martha Cohen Prize Fund Student</b>	E	\$450	\$11,482
<b>Dustin Peers Memorial Visual Arts Award</b>	E	\$10,500	\$238,384
Alberta University of the Arts			
Florence Academy of Art			
Visual College of Art and Design of Vancouver			
University of Lethbridge			
<b>E. George Brigden Memorial Scholarship</b>	E	\$1,000	\$3,638
University of Calgary			
University of Toronto			
<b>E.F. Coste Scholarship</b>	E	\$-	\$4,969
<b>Edith Berger Memorial Scholarship Fund</b>	E	\$1,000	\$27,262
University of Lethbridge			
<b>Educational Enhancement Supports for Financial Needs Students Fund</b>	FT	\$647,180	\$123,953
Pineridge School			
Ernest Morrow School			
Children's Village School			
Terry Fox School			
Niitsitapi Learning Centre			
Monterey Park School			
Keeler School			
Jack James High School			
Erin Woods School			
Lester B. Pearson High School			
Piitoayis Family School			
O.S. Geiger School			
Falconridge School			
Penbrooke Meadows School			
Terrace Road School			
CBE - Technology Loan Program for Equity Schools			
CBE - Graphing and Scientific Calculators for High			
CBE - Dual Credit and/or Exploratory Programs			
CBE - Career and Technology Foundations and Studies			
<b>EducationMatters Scholarship Fund</b>	FT	\$32,055	\$69,205
Simon Fraser University			
University of Calgary			
North Island College			
Bow Valley College			
University of Lethbridge			
Olds College			
SAIT Polytechnic			
University of British Columbia			
University of Waterloo			
University of Toronto			
Thompson Rivers University			
<b>EducationMatters Scholarship Fund</b>	E	\$-	\$31,808
<b>Eimer Scholarship Fund Award for Health Care (Calgary Foundation)</b>	FT	\$8,000	\$11,000
Mount Royal University			
University of Calgary			
<b>EllisDon Student Award Fund</b>	FT	\$2,211	\$4,423
SAIT Polytechnic			
<b>Emily Sharpe Memorial Scholarship Fund</b>	E	\$17,000	\$388,595
University of Calgary			
University of British Columbia			
University of Alberta			
Queen's University			
Mount Royal University			
University of Lethbridge			
<b>Emmalee Cherweniuk Award Fund</b>	E	\$800	\$15,407
University of Winnipeg			
<b>Ena Paul Memorial Award</b>	E	\$-	\$4,986
<b>Enhancing Education for Students with Special Needs Fund</b>	E	\$1,650	\$38,595
CBE - Literacy Enriched Learning Environments			
<b>Enhancing ESL Education Endowment Fund</b>	E	\$-	\$60,950



## Grant and Award Transactions By Fund

<b>Fund Name</b>	<b>E/FT</b>	<b>Total 2020 Disbursement</b>	<b>Fund Market Value</b>
ENMAX Scholarship Fund SAIT Polytechnic University of Western Ontario	FT	\$5,000	\$29,469
Everett and Mitchell Code Scholarship University of Calgary	E	\$5,000	\$2,978
Everett and Mitchell Code Scholarship	FT	\$-	\$12,554
F. Margaret Milligan Scholarship	E	\$-	\$131
Fogolâr Furlan di Calgary Italian Award University of Calgary Mount Royal University	FT	\$3,000	\$12,215
Forest Lawn Resiliency Scholarship Fund Mount Royal University	FT	\$4,000	\$6,080
Frank L. Woodman Scholarship	E	\$-	\$2,564
Frank Whipple Memorial Bursary University of Calgary	E	\$1,000	\$6,230
Fuel for School Fund	FT	\$-	\$15,423
Future Leaders Scholarship Fund	FT	\$-	\$958
Future Leaders Fund	E	\$-	\$48,706
Future Leaders Scholarship Fund Carleton University	E	\$1,000	\$31,311
Gary Weimann Award for Community Service Student	E	\$500	\$27,237
George Morley Memorial Scholarship Alberta University of the Arts	E	\$500	\$12,346
Georgie C. Higgins Investment Fund for Lester B. Pearson High School	E	\$-	\$18,450
Georgie C. Higgins Junior High Memorial Fund	E	\$-	\$18,260
Giordano Fund	FT	\$-	\$38,600
Green & Gold Scholarship Fund University of Lethbridge Mount Royal University University of Calgary	E	\$7,000	\$207,442
Green & Gold Scholarship Fund	FT	\$-	\$8,310
Greta Marofke Kids Affected by Cancer Scholarship Fund University of British Columbia University of Calgary	E	\$3,000	\$65,480
H.D. Cartwright Memorial Award	E	\$-	\$13,247
Hal Winlaw Health & Nutrition Legacy Award University of Calgary	E	\$1,000	\$25,314
Haworth & Heritage Business Interiors Architecture/Interior Design Scholarship Fund University of British Columbia Mount Royal University	E	\$2,000	\$37,786
Haworth & Heritage Business Interiors Architecture/Interior Design Scholarship Fund	FT	\$-	\$4,157
Henry Wise Wood Class of 1970 Scholarship Fund	FT	\$-	\$95
Henry Wise Wood Warriors Legacy Fund University of Alberta Mount Royal University University of Calgary	E	\$1,500	\$64,962
Henry Wise Wood Warriors Legacy Fund	FT	\$-	\$281
Hopewell Scholarship Fund University of Calgary	FT	\$3,000	\$9
Hugh Robertson Science Award Fund Student	E	\$1,000	\$29,366
Integro Legacy Fund CBE - Discovering Choices	FT	\$30,000	\$61,464
Integro Legacy Scholarship Fund Alberta University of the Arts Lethbridge College	FT	\$4,000	\$3,455
Ivy & Len Freeston Student Award Fund University of Toronto	E	\$904	\$21,096
Ivy & Len Freeston Student Award Fund University of Toronto	FT	\$96	\$934
James Fowler School Award Fund Student	E	\$1,000	\$17,768
Jason and Jane Louie Memorial Fund	E	\$-	\$8,874
Jennifer Ellen Shepherd Memorial Award Fund	E	\$-	\$93,867

## Grant and Award Transactions By Fund

<b>Fund Name</b>	<b>E/FT</b>	<b>Total 2020 Disbursement</b>	<b>Fund Market Value</b>
Jennifer Eyton Memorial Trust Fund	E	\$-	\$3,466
Joan Ethier Women in Science Scholarship	E	\$18,770	\$449,955
University of Calgary			
University of Victoria			
University of Waterloo			
McGill University			
Carleton University			
Joanne Mugford Memorial Art Award	E	\$-	\$9,562
Job's Daughters International Scholarship	E	\$3,000	\$5,705
University of Calgary			
John Bancroft Memorial Award	E	\$-	\$15,991
Juno Beach Parents' Society Scholarship	FT	\$500	\$14,201
University of Winnipeg			
Kaiti Perras Love of Dance Memorial Fund	E	\$5,803	\$135,886
Forest Lawn High School			
Keith Carswell Memorial Scholarship	E	\$-	\$11,157
Keith Yu Memorial Scholarship Fund	E	\$2,500	\$33,073
University of British Columbia			
Concordia University of Edmonton			
University of Calgary			
Kermet Archibald & Jacoba Van den Brink Memorial Scholarship Fund (Calgary Foundation)	FT	\$90,000	\$107,590
University of British Columbia			
University of Calgary			
SAIT Polytechnic			
Mount Royal University			
University of Toronto			
University of Alberta			
Bow Valley College			
Laine McLeod Memorial Scholarship	E	\$-	\$7,833
Lana Hanson Memorial Scholarship Fund	E	\$-	\$6,573
Langevin School Bursary	E	\$-	\$30,235
Lauber Student Award	FT	\$-	\$6,740
Laurie Sommerville Scholarship Award Fund	FT	\$6,800	\$33,149
SAIT Polytechnic			
MC College			
Bow Valley College			
Lawrence Parker Memorial Scholarship	E	\$1,000	\$8,878
University of Calgary			
University of Alberta			
Lehew-Wyman Family Endowment Fund	E	\$2,747	\$70,550
Crescent Heights High School			
Lord Shaughnessy High School Enhancement	FT	\$-	\$4
Louise Dean High School Awards	FT	\$4,000	\$8,668
Mount Royal University			
University of Calgary			
Louise Dean School Fund	FT	\$950	\$-
Louise Dean School			
M. P. Hess Fund	E	\$469	\$10,962
CBE - Literacy Enriched Learning Environments			
Margaret and Bill Whelan Fund	E	\$3,330	\$130,599
CBE - Literacy Enriched Learning Environments			
Marjorie Taylor Memorial Scholarship Fund	E	\$3,750	\$74,616
University of Victoria			
University of Toronto			
University of British Columbia			
Marnie Whitehead Memorial Scholarship Student	E	\$225	\$2,111
Mary Belkin Memorial Scholarship Fund	E	\$1,000	\$33,182
University of British Columbia			
Mary Nelson Memorial Fund	E	\$2,943	\$68,802
A.E. Cross School			
Acadia School			
All Boys Program			
Arbour Lake School			
Balmoral Middle School			
Maureen Langston Memorial Fund	FT	\$-	\$5,365
Maurice A. Spring Scholarship	E	\$750	\$1,659
Stanford University			
Mawer Investment Management Literacy Fund	E	\$2,520	\$66,068
CBE - Literacy Enriched Learning Environments			
Mawer Investment Management Literacy Fund	FT	\$6,903	\$-
CBE - Literacy Enriched Learning Environments			
McGill University Faculty of Agricultural and Environmental Sciences Fund	E	\$328	\$7,698
CBE - Literacy Enriched Learning Environments			

# Grant and Award Transactions By Fund

<b>Fund Name</b>	<b>E/FT</b>	<b>Total 2020 Disbursement</b>	<b>Fund Market Value</b>
McKillop Student Award Endowment Fund Student	E	\$4,000	\$111,704
Mobility Quotient Fund CBE - Amplify! Program	FT	\$23,750	\$-
MW & JR Tebo Memorial Journalism Fund Dr. E.P. Scarlett High School	E	\$663	\$21,961
Nickolas Paswisty Memorial Bursary Bow Valley College	FT	\$500	\$1,909
Pamela Jane Hardy Memorial Award Fund	E	\$-	\$68,707
Pay It Forward Fund University of California	FT	\$1,500	\$4,485
Public Education Enhancement Fund (Designated)	E	\$-	\$42
Public Education Enhancement Fund (Designated)	FT	\$233,669	\$34,678
Children's Village School		Jack James High School	
Crescent Heights High School		Griffith Woods School	
Piitoyais Family School		Discovering Choices Outreach - Downtown	
Lord Beaverbrook High School		Manmeet Singh Bhullar School	
Rosemont School		Battalion Park School	
Forest Lawn High School		Andrew Sibbald School	
Somerset School		Glendale School	
Silver Springs School		Dr. Freda Miller School	
Ernest Morrow School		Jack James High School	
King George School		Louise Dean School	
Midnapore School		Cecil Swanson School	
Douglas Harkness School		Niitsitapi Learning Centre	
Mckenzie Lake School		CBE - Literacy Enriched Learning Environments	
<b>Public Education Enhancement Fund (Discretionary)</b>	<b>E</b>	<b>\$30,039</b>	<b>\$350,505</b>
Hillhurst School		North Haven School	
Northern Lights School		Patrick Airlie School	
Penbrooke Meadows School		Queen Elizabeth High School	
Ranchlands School		Samuel W. Shaw Middle School	
Sir John A. Macdonald School		Terry Fox School	
Thomas B. Riley School		Vincent Massey School	
William Reid School		Wilma Hansen School	
CBE - Literacy Enriched Learning Environments			
<b>Public Education Enhancement Fund (Discretionary)</b>	<b>FT</b>	<b>\$16,685</b>	<b>\$9,876</b>
Crescent Heights High School		Niitsitapi Learning Centre	
CBE - Literacy Enriched Learning Environments		Griffith Woods School	
Queen Elizabeth Deaf and Hard of Hearing Scholarship and Program Enhancement Fund	E	\$-	\$89,318
Queen Elizabeth Deaf and Hard of Hearing Scholarship and Program Enhancement Fund	FT	\$-	\$14,176
R.M. (Mac) Dobson Creative Writing Scholarship	FT	\$-	\$872
Richard D. Tingle Student Award Fund Bow Valley College	E	\$3,000	\$37,124
Richard Dunn Music Scholarship Fund	FT	\$-	\$2,035
Rick Theriault Outstanding Athletic Contribution Award Fund	E	\$-	\$24,290
Ross Glen Scholarship Fund SAIT Polytechnic	E	\$1,000	\$53,376
Ruth Ursula Leipziger Scholarship Fund University of Calgary	E	\$1,500	\$35,782
School Designated Flow Through Fund	FT	\$32,346	\$84,212
Griffith Woods School		Fish Creek School	
King George School		Belvedere Parkway School	
Woodlands School		Sam Livingston School	
Manmeet Singh Bhullar School		Mount View School	
Chinook Park School		Niitsitapi Learning Centre	
		Dr. Gordon Higgins School	
		Marlborough School	
		West Dover School	
		James Short Memorial School	
		Citadel Park School	



# Grant and Award Transactions By Fund

<b>Fund Name</b>	<b>E/FT</b>	<b>Total 2020 Disbursement</b>	<b>Fund Market Value</b>
Schools Helping Schools Fund	E	\$1,989	\$48,228
CBE - Literacy Enriched Learning Environments			
Schools Helping Schools Fund	FT	\$1,567	\$-
CBE - Literacy Enriched Learning Environments			
Shawn Whitney Memorial Award Fund	E	\$-	\$17,396
Sir Winston Churchill Enterprise & Innovation Scholarship	E	\$-	\$8,717
Southland Transportation Career Pathways Fund	E	\$353	\$8,263
Crescent Heights High School			
Southland Transportation Scholarship Fund	FT	\$5,657	\$6,540
University of Calgary			
Southland Transportation Scholarship Fund	E	\$348	\$8,764
University of Calgary			
Steven Irving Memorial Music Scholarship	E	\$1,500	\$42,851
Student			
Sunnyside School Endowment Fund	E	\$-	\$31,402
Supports for Students Born with Fetal Alcohol Spectrum Disorder	E	\$-	\$43,307
Susy Devlin Memorial Award Fund	E	\$-	\$35,514
TEAM Leadership Lord Beaverbrook HS Fund	E	\$323	\$7,597
CBE - Literacy Enriched Learning Environments			
Teens Against Drinking & Driving (TADD)	E	\$-	\$7,453
Tenaris Merit Awards Fund	FT	\$10,000	\$1,000
University of Waterloo			
University of Calgary			
Carleton University			
McMaster University			
University of Alberta			
Terry Wright Endowment Fund	E	\$358	\$8,382
CBE - Literacy Enriched Learning Environments			
The Calgary Bridge Foundation for Youth	FT	\$-	\$2,501
The Governors' Endowment Fund	E	\$2,633	\$8,885
CBE - Literacy Enriched Learning Environments			
The Marguerite Patricia P. Bannister Scholarship Fund (Calgary Foundation)	FT	\$90,000	\$197,389
University of Calgary			
Student			
Thomas Moore Memorial Bursary Fund	E	\$-	\$20,574
Thomas Walter Morrish Memorial Scholarship	E	\$600	\$9,035
Student			
Thorner/Johnston/DiMarzo Family Bursary	FT	\$13,500	\$9,000
University of Calgary			
University of Toronto			
Tiberious Publishing Program Fund	E	\$961	\$16,175
CBE - Literacy Enriched Learning Environments			
Tom Inkster Memorial Scholarship Fund	FT	\$1,000	\$42
University of British Columbia			
Trades Related Career Pathways Student Award	E	\$1,000	\$96,062
SAIT Polytechnic			
Tyler Zeer Endowment Fund	E	\$1,618	\$37,593
Thomas B. Riley School			
Verna Hart Toole Legacy Award Fund	FT	\$-	\$435
Viscount Bennett Band Parents Assoc. Award Fund	E	\$100	\$14,141
Student			
William & Toshimi Sembo Badminton Scholarship Fund	FT	\$-	\$1
William Keir MacGougan Memorial Bursary	E	\$1,000	\$32,679
University of Calgary			
William Reid School Fund	E	\$926	\$21,657
William Reid School			
Willow Park School Program Enhancement Fund	FT	\$-	\$33
Youth Mentorship Endowment Fund	E	\$455	\$10,638
Balmoral Middle School			

**Total Distributed**

**\$1,552,181**

**\$7,549,105**

\*Total disbursements (\$1,552,181) does not include unused grant amounts returned from prior year distributions.

## Mission

To promote and facilitate community engagement with public education, to enhance and enrich the education offered to all students – enabling them to fully realize their potential and become valued and contributing global citizens.

## Vision

**A society that promotes and values excellence  
in public education.**

## Mandate

We enhance and advance public education in Calgary by providing awards and grants that help students;

We mobilize resources by offering a wide range of donation opportunities that support the community's commitment to excellence in public education and relief of poverty for school-age children;

We inspire passion for public education by fostering dialogue about the role of public education in our society



@edmattersyyc

